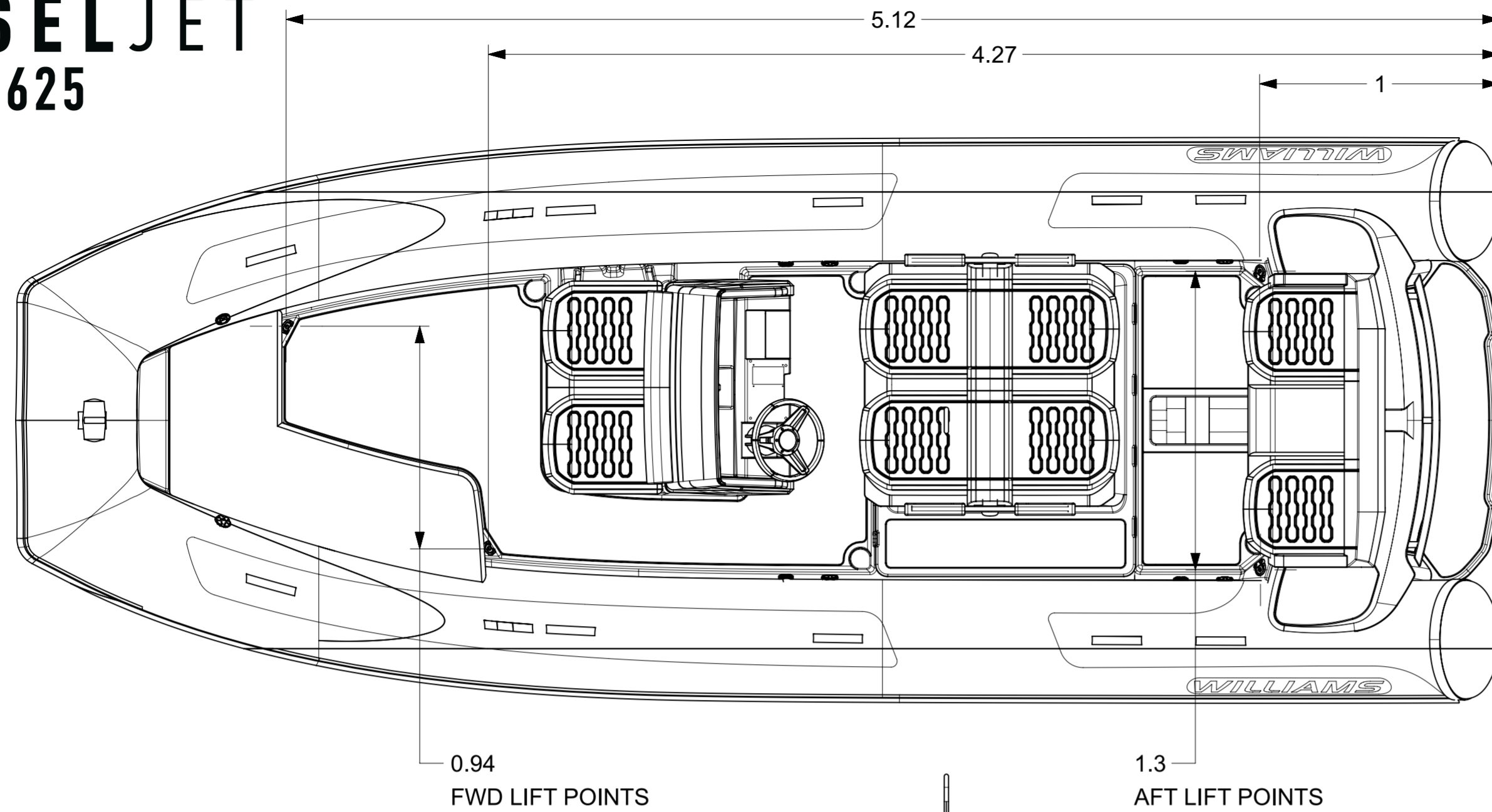


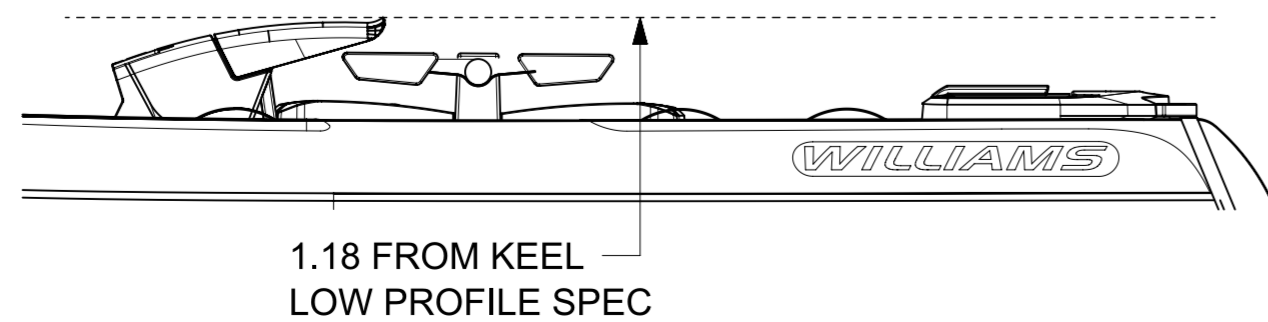
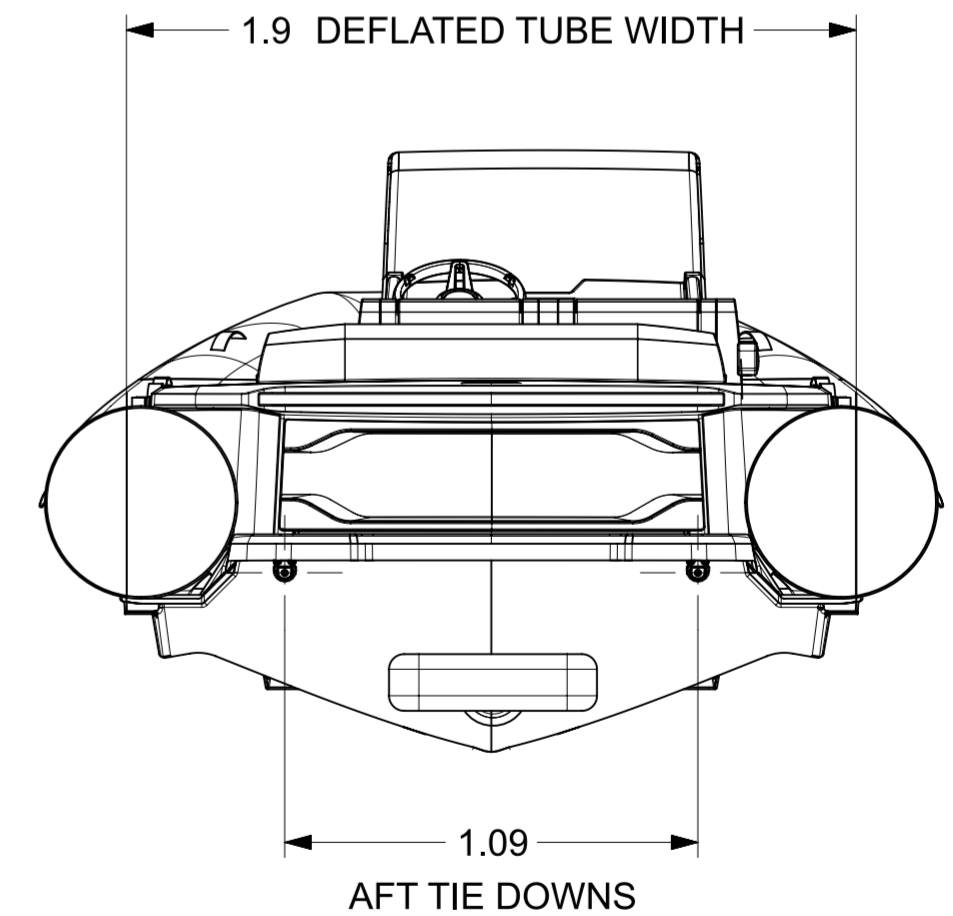
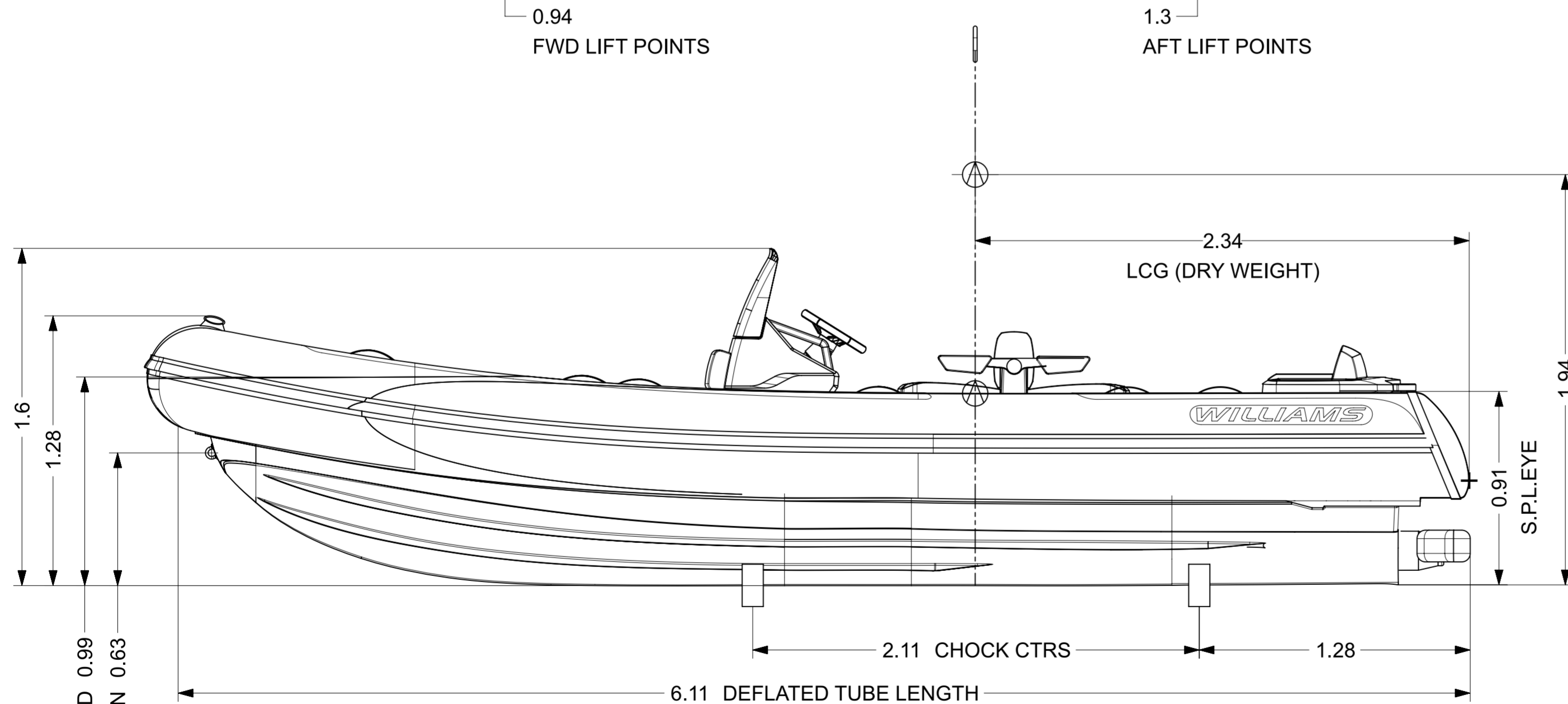
DIESELJET 625



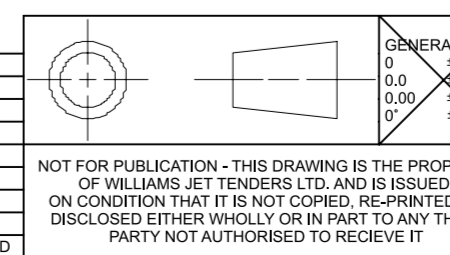
LENGTH	6.32m (±1%)
BEAM	2.41m (±1%)
DRAFT (FULLY LOADED)	0.50m
ENGINE	YANMAR 4LV
POWER	195hp = 145kW 230hp = 172kW
DRY WEIGHT	1344Kg
SEATING CAPACITY	11
FUEL	DIESEL
FUEL CAPACITY	140L
MAX. SPEED	44mph ≅ 71kph / 46mph ≅ 74kph
No. TUBE COMPARTMENTS	6
CE DESIGN CATEGORY	C

NOTES;

1. LENGTH / BEAM TOLERANCE DUE TO VARIATION IN TUBE AIR PRESSURE.
2. AVERAGE 230HP MODEL DRY WEIGHT STATED; ACTUAL WEIGHT DEPENDENT ON OPTIONS FITTED.
3. GARAGE STORAGE CONFIGURATION:
 - QUICK RELEASE STEERING WHEEL
 - FOLDING HELM
 - BOW TUBE DEFLATED
4. REFER TO DWG RD444 FOR CHOCK PROFILES.
5. LOW PROFILE OPTION:
 - LP ENGINE COVER
 - REMOVABLE BACKREST & ARMRESTS
6. ALL DIMENSIONS IN METERS.



REV.	DATE	DETAILS	FZ	OB
1	09/10/2023	DOCUMENT PRODUCTION	FZ	OB
			DRAWN	APPVD



DRAWN	FZ	DATE	09/10/2023
APPVD	OB		
PROJECT:			
INSPECTION LEVEL:			
MATERIAL & FINISH			

WILLIAMS

DIESELJET 625 (2024MY)

REMOVE ALL BURRS & BREAK SHARP EDGES

GENERAL SURF FINISH Ra 1.6UM DIMENSIONS IN MM UNLESS STATED

DO NOT SCALE DRAWING

SCALE 1:20

SHEET 1 OF 1

NOT FOR PUBLICATION - THIS DRAWING IS THE PROPERTY OF WILLIAMS JET TENDERS LTD. AND IS ISSUED ON CONDITION THAT IT IS NOT COPIED, RE-PRINTED OR DISCLOSED EITHER WHOLLY OR IN PART TO ANY THIRD PARTY NOT AUTHORISED TO RECEIVE IT

A2