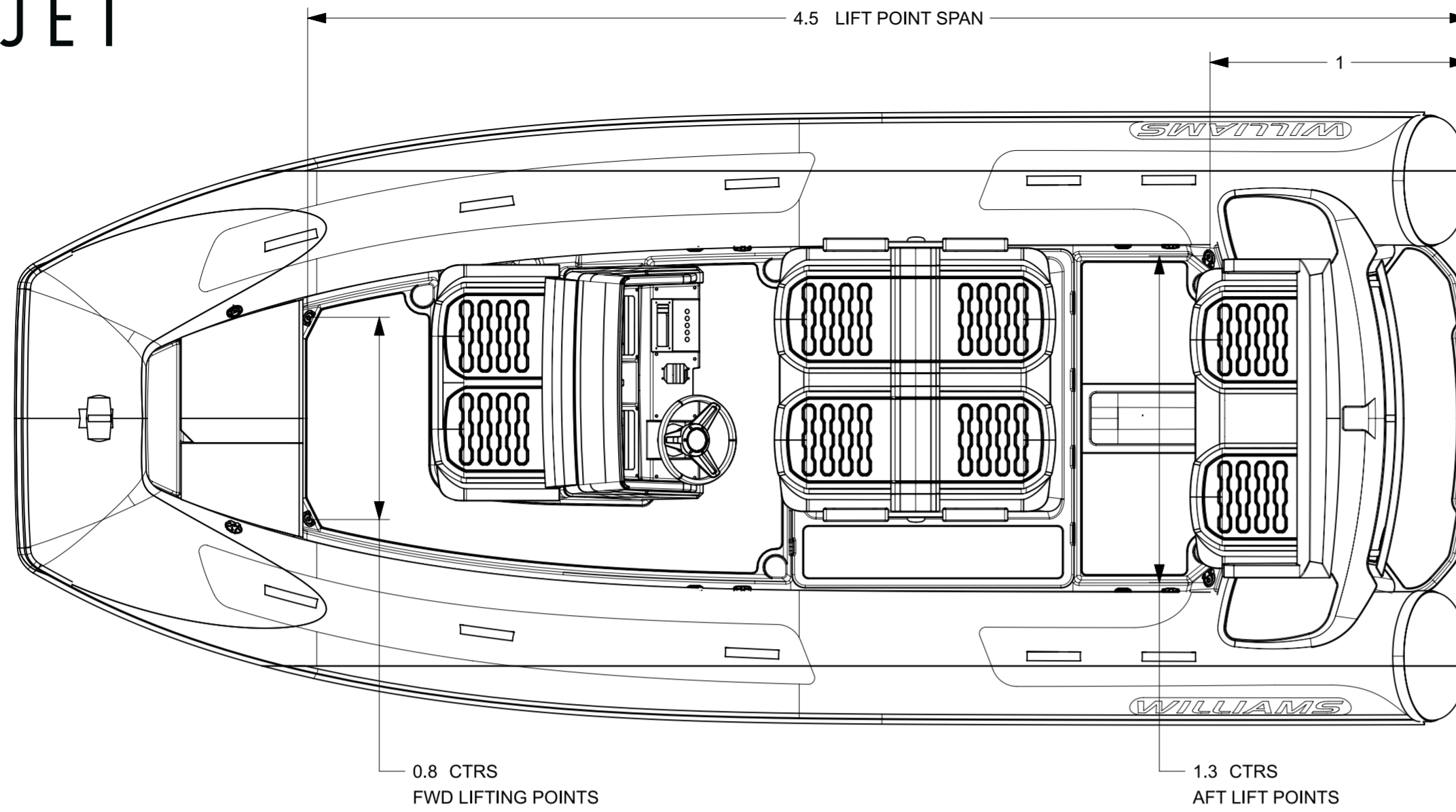


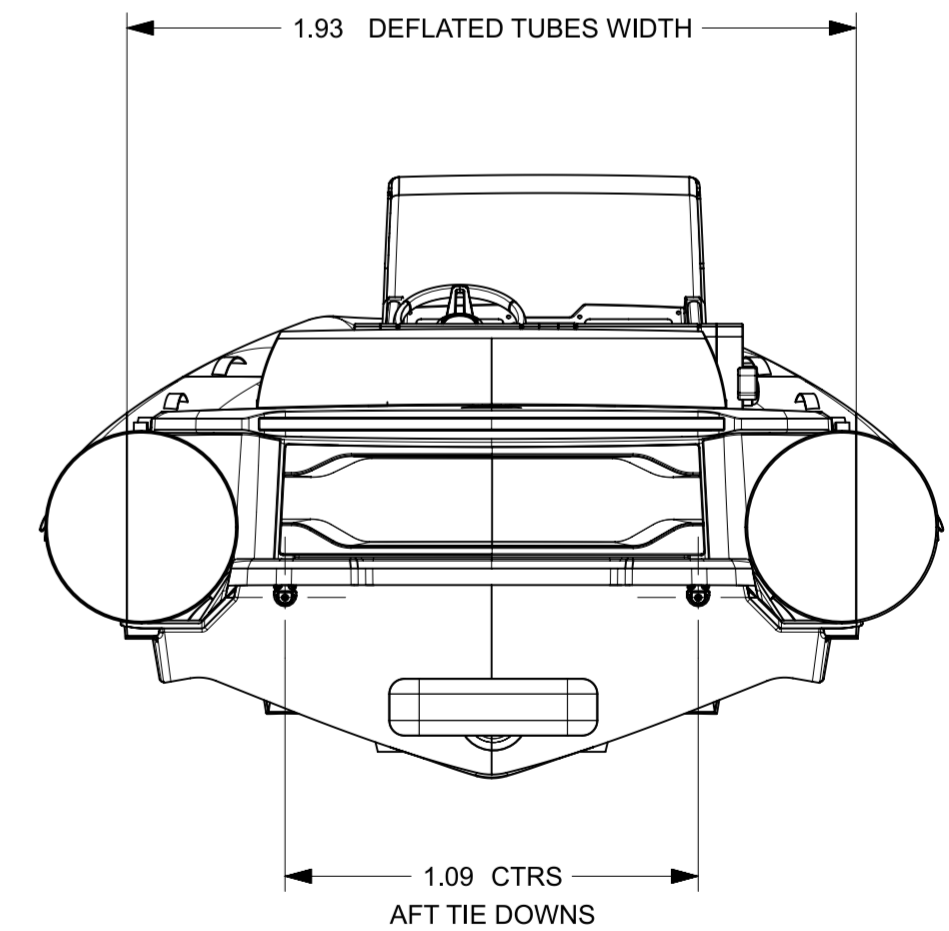
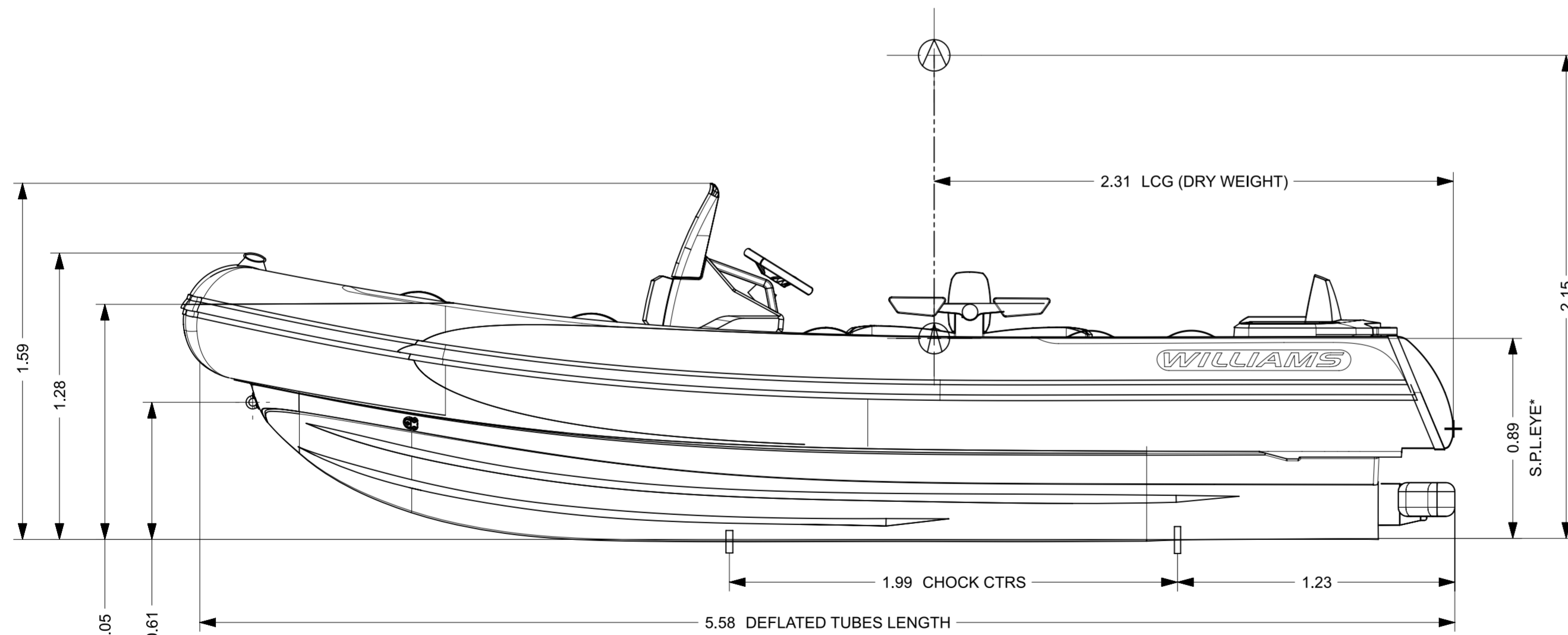
# DIESELJET 565



LENGTH	5.71m (±1%)
BEAM	2.41m (±1%)
DRAFT (FULLY LOADED)	0.50m
ENGINE	YANMAR 4LV
POWER	150hp ≅ 111kW / 195hp ≅ 143kW
DRY WEIGHT	1227Kg
SEATING CAPACITY	9
FUEL	DIESEL
FUEL CAPACITY	140L
MAX. SPEED	40mph ≅ 64kph / 44mph ≅ 71kph
No. TUBE COMPARTMENTS	6
CE DESIGN CATEGORY	C

**NOTES:**

- LENGTH / BEAM TOLERANCE DUE TO VARIATION IN TUBE AIR PRESSURE.
- AVERAGE DRY WEIGHT STATED; ACTUAL WEIGHT DEPENDENT ON OPTIONS FITTED.
- GARAGE STOWAGE CONFIGURATION:
  - QUICK RELEASE STEERING WHEEL
  - FOLDABLE HELM
  - BOW TUBE DEFLATED
- LOW PROFILE OPTION:
  - LP ENGINE LOWER
  - REMOVABLE BACKREST & ARMREST
- REFER TO DWG RD444 FOR CHOCK PROFILES.
- ALL DIMENSIONS IN METERS.

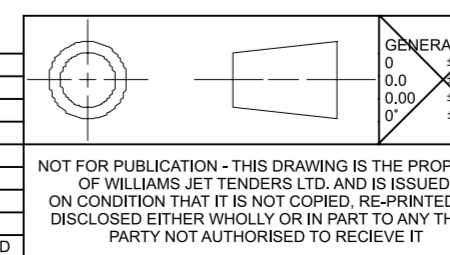


BOW DEFLATED 1.05

FWD TIE DOWN 0.61

1.18 FROM KEEL  
LOW PROFILE SPEC

REV.	DATE	DETAILS	FZ	OB
1	13/09/2023	DOCUMENT PRODUCTION	FZ	OB



GENERAL TOL.	0.00	0.25	0.40	0.50
REMOVE ALL BURRS & BREAK SHARP EDGES				
GENERAL SURF FINISH	ENISH Ra 1.6UM			
DIMENSIONS IN MM UNLESS STATED				
DO NOT SCALE DRAWING				

NAME	DATE	<b>WILLIAMS</b>
DRAWN FZ	13/09/2023	
APPVD OBB		
PROJECT:		
INSPECTION LEVEL:	TITLE	
MATERIAL & FINISH	<b>DIESELJET 565 (2024MY)</b>	
PART NO.		
WPT-000565DJ-P99-2024MY-DATASHEET_dwg1		
SCALE 1:20	SHEET 1 OF 1	