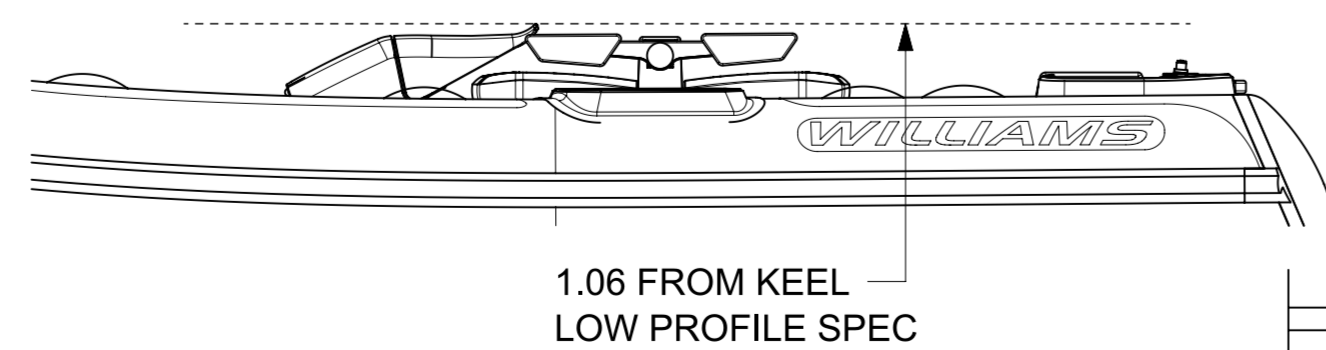
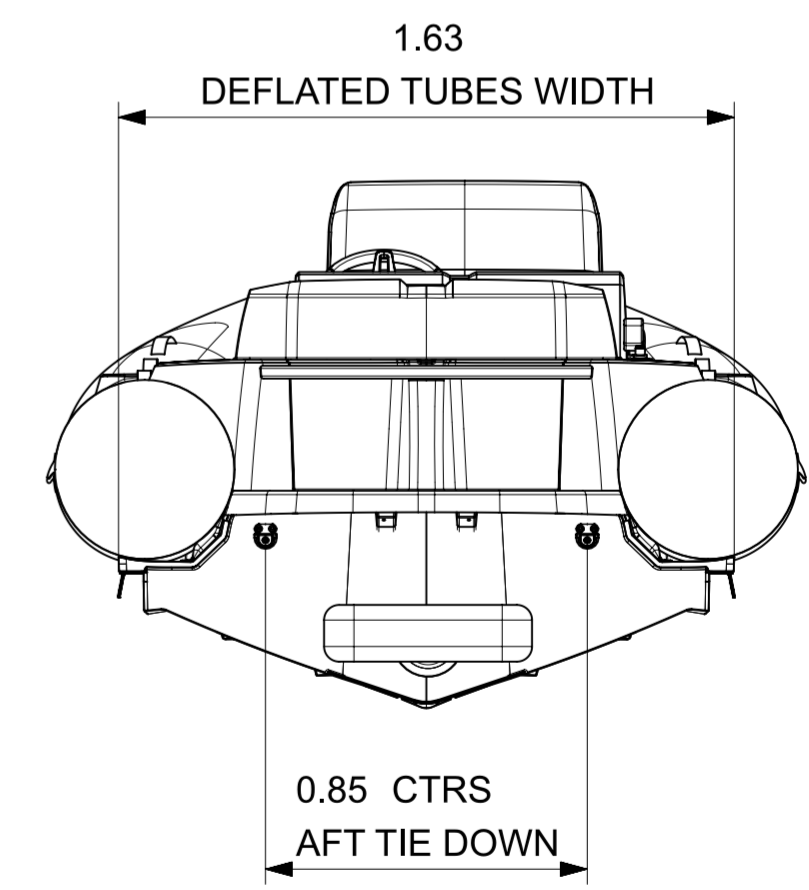
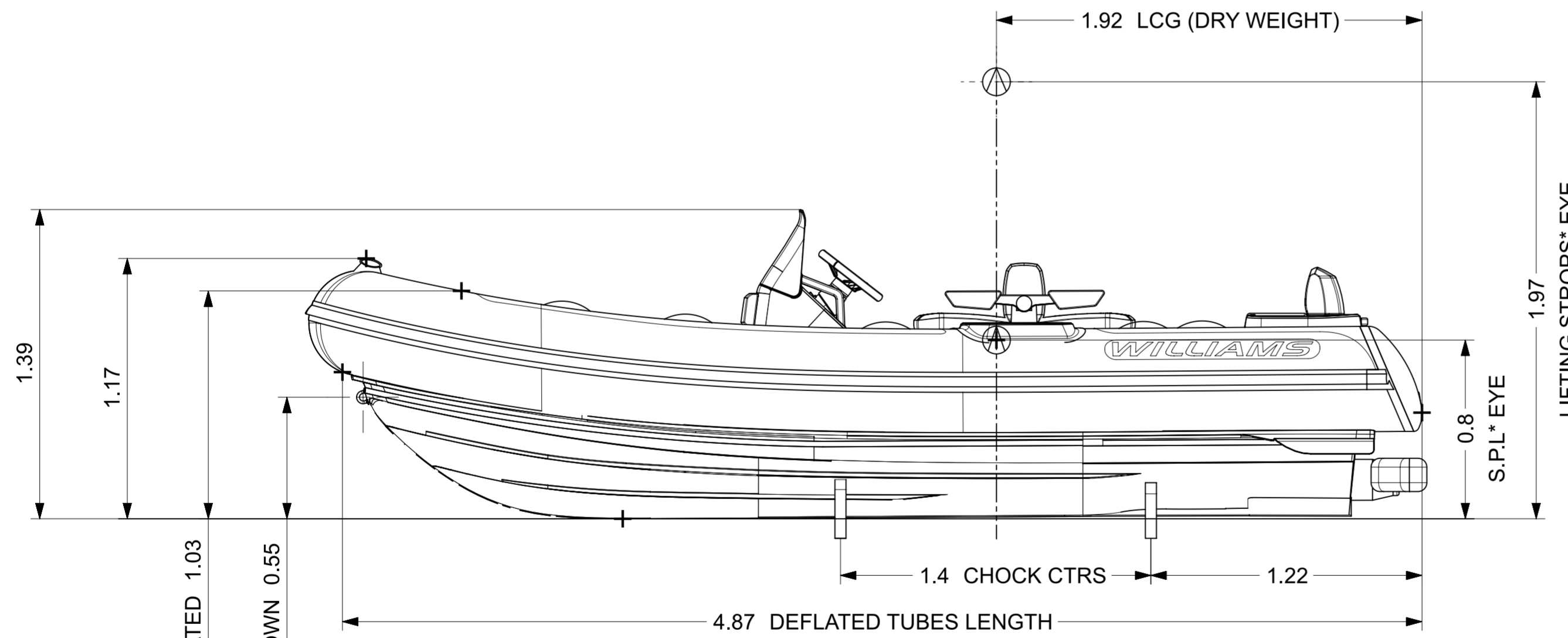
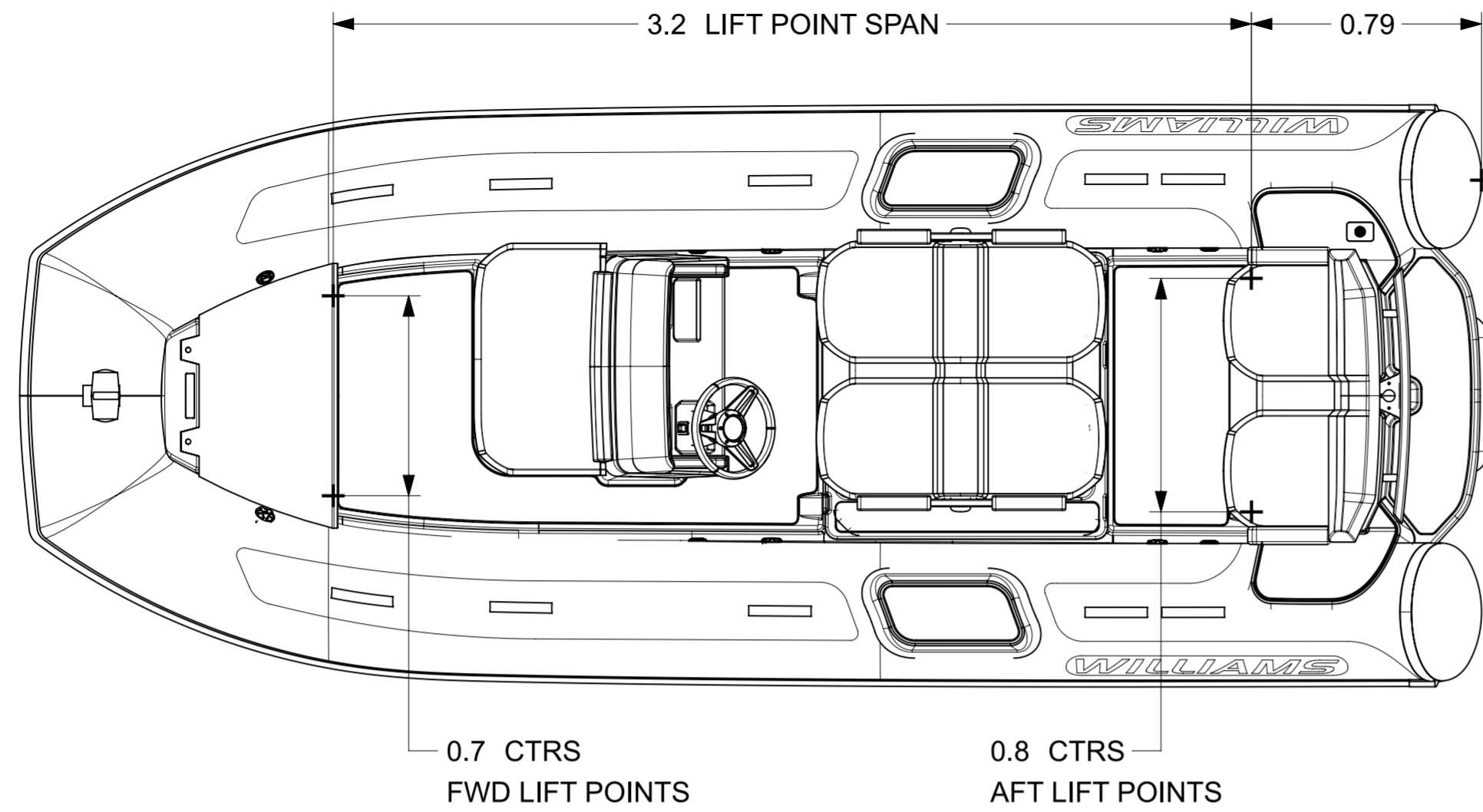


# DIESELJET 505



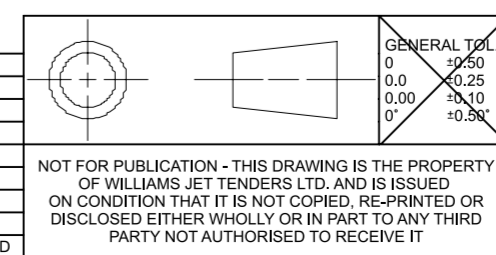
LENGTH	5.03m (±1%)
BEAM	2.01m (±1%)
DRAFT (FULLY LOADED)	0.47 m
ENGINE	YANMAR 4JH-110
POWER	110hp ≅ 81kW
DRY WEIGHT	905 kg
SEATING CAPACITY	8 + 1
FUEL	DIESEL
FUEL CAPACITY	68L
MAX. SPEED	40 mph ≅ 64 kph
No. TUBE COMPARTMENTS	5
CE DESIGN CATEGORY	C

**NOTES:**

- LENGTH / BEAM TOLERANCE DUE TO VARIATION IN TUBE AIR PRESSURE.
- AVERAGE DRY WEIGHT STATED; ACTUAL WEIGHT DEPENDENT ON OPTIONS FITTED.
- GARAGE STOWAGE OPTION:
  - HELM FOLDED DOWN.
  - QUICK RELEASE STEERING WHEEL.
  - BOW TUBE DEFLATED. (AUTO BOW TUBE INFLATOR OPTION REQUIRED\*)
- LOW PROFILE OPTION:
  - LP ENGINE COVER
  - ROMOVABLE BACKREST & ARMRESTS
- REFER TO DRAWING RD149 FOR CHOCK PROFILES.
- ALL DIMENSIONS IN METERS.

OPTIONAL ACCESSORY\*

REV.	DATE	DETAILS	FZ	OB
1	04/10/2023	PRODUCTION RELEASED	FZ	OB



GENERAL TOL.	0	+0.50
	0.0	+0.25
	0.00	+0.10
	0*	+0.00

DRAWN FZ		DATE 04/10/2023	<b>WILLIAMS</b>
APPVD OBB			
PROJECT: P101B			TITLE
INSPECTION LEVEL:			DIESELJET 505 (2024MY)
MATERIAL & FINISH			
REMOVE ALL BURRS & BREAK SHARP EDGES			PART NO.
GENERAL SURFACE FINISH Ra 1.6UM			WPT-000505DJ-P101-2024MY-DATASHEET_dwg1
DIMENSIONS IN MM UNLESS STATED			SCALE 1:20
DO NOT SCALE DRAWING			SHEET 1 OF 1

A2